



Oil Filtration : Hanson Kilmore

Hanson Kilmore

Hanson Kilmore installed a FM 440 fitted with a 6LPM pump to their tertiary crusher.

The previous oil sample indicated the oil had high Iron, Silicon, PQ and an ISO 23/20.

Since the pump and motor was installed to the unit the oil has seen a reduction in;

- ISO to 18/11 or 70%
- Iron by 92%
- Copper by 41%
- Silicon by 95%
- PQ by 100%

The oil in the sight glass is now a visual indicator as the oil in the tank is gold in colour not dirty grey.



Site: Filter Technology Australia Pty Ltd
 Attention To: PHIL MARHEINE
 Machine: HANSON1 Hanson Kilmore
 Sample Location: Tertiary
 Oil Type: ISO 150



4 Walter Street | PO Box 490
 Singleton NSW 2330
 Phone: (02) 6571-1444
 Facsimile: (02) 6571-4433



Sample Date	29-Jun-05	12-Dec-05
Analysis Report No.	-	266,438
Service Meter Reading	240,204	0hrs
Electric SMR	-	-
Oil Hrs	-	-
Oil Changed?	No	No

Wear Metals	Limit	ppm	ppm	ppm	ppm	ppm	ppm
lead	20					6	2
iron	60					88	7
aluminium	20					6	0
copper	60					12	7
chromium	15					1	0
tin	15					1	1
nickel	15					0	0
silver						0	0
titanium						0	0

Contaminants	Limit	ppm	ppm	ppm	ppm	ppm	ppm
silicon	30					23	1
sodium	60					5	0
vanadium						0	0

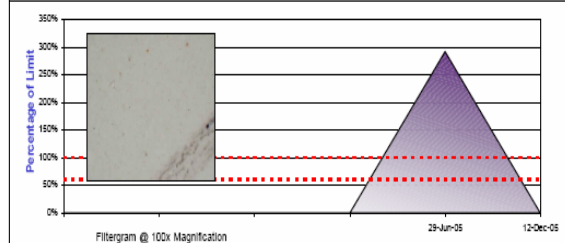
Oil Additives	Limit	ppm	ppm	ppm	ppm	ppm	ppm
magnesium						5	0.9
zinc						6	7
molybdenum						0	0
calcium						23	18
phosphorous						151	159
boron						9	2
barium						0	1

Physical Tests							
TBN						0	0
TAN						0.00	0.00
fuel dilution %						0	0
water %	0.05					< 0.1	< 0.1
viscosity index						97	99
visc @ 100oC - Cst	15					18.20	18.33
visc @ 40oC - Cst	150					205	204

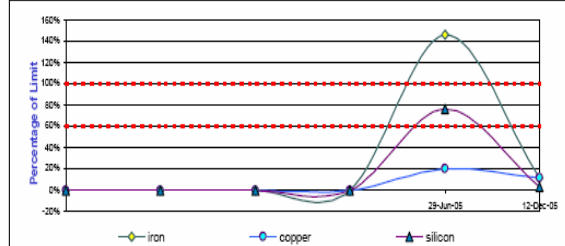
FTIR Analysis							
soot - abs						0	0
glycol%						0	0
water ppm						0	0
oxidation - abs						0	0
nitration - abs						0	0
sulphation - abs						0	0

Particle Analysis							
particle count in 1ml						5981	18338
ISO-4406 6um \ 14um	16/13	-	-	-	-	23/20	18/11
PQ90 Fe - mg \ ltr	60					175	0

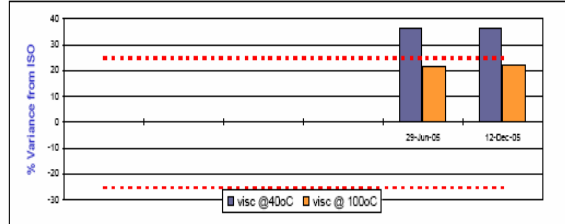
PQ - Ferrous Wear Debris (Fe mg \ ltr)



Major Small Particle Element Trends



Viscosity Condition From New Oil Specification



Comments & Recommendation

Results within acceptable limits. Continue with regular maintenance and monitoring.

NOTE: This machine oil condition report should be used in conjunction with normal maintenance practices. All care will be taken in processing and analysing samples but no express or implied guarantee is offered in regard to the continuing operation or condition.