

Figure 1

Removing the Element Assembly

(Please consult the Operation and Maintenance Manual for your specific product.)

- 1 Remove the element assembly from the filter housing by unscrewing the tee handle counter-clockwise.

Stripping the Element Assembly

- 2 Holding the tee handle, remove the compression nut and return tube washer and retain (**figure 1**).
- 3 Remove post seal and retain.
- 4 Slide off all elements and post seals from return tube.

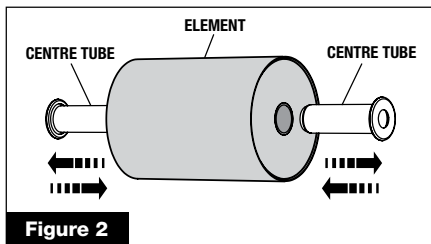


Figure 2

- 5 Remove the centre tubes from each end of the old elements and retain (**figure 2**).
- 6 Remove the top post seal and return tube washer and retain (**figure 3**).
- 7 Remove lid O-ring and lid gasket and retain (**figure 3**).

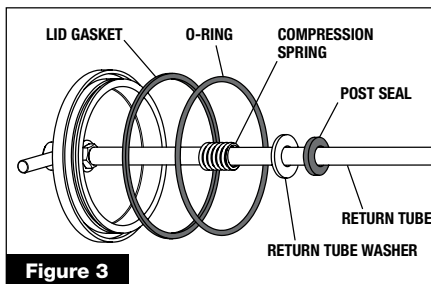


Figure 3

Cleaning and Preparation for Reassembly

Note: Use only approved food grade cleaning agent.

- 8 Clean all retained components.
- 9 Clean inside of return tube using return tube brush (Part No FF5035) to remove accumulated residue.
- 10 Inspect post seals, lid O-ring and lid gasket for damage or hardening. Replace at every second element change or if damaged.
- 11 Unpack new filter elements (and other components if they are to be replaced) ready for use.

Reassembly of Filter Assembly

- 12 Carefully install the O-ring and lid gasket into lid (**figure 3**).

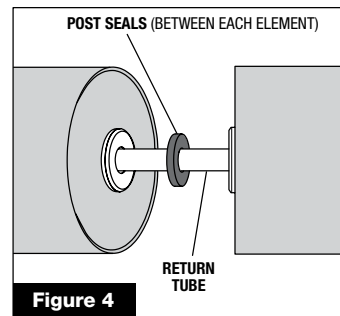


Figure 4

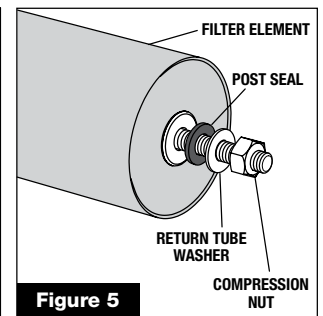


Figure 5

- 13 Slide the top return tube washer, then the post seal on to the return tube (**figure 3**).
- 14 Insert the centre tubes into the new elements. Ensure they are fully inserted (**figure 2**).
- 15 Load all the elements onto the return tube making sure there is a post seal between each element (**figure 4**).
- 16 Replace the bottom post seal, return tube washer and compression nut (**figure 5**).
- 17 After loading all the elements and post seals on to the return tube, push down on the elements to seat them against the compression spring. This makes it easier to tension the compression nut correctly.

Tensioning the Compression Nut

- 18 Screw the compression nut firmly against the element assembly (**figure 6**), using the correct spanner (Part No FM 0027).
 - 20 Continue tightening the compression nut until the correct length of thread is exposed. Check by using the notch on the handle of the spanner (**figure 7**).
- Note:** This is essential for the correct installation of the assembly into the housing, the subsequent sealing and the filter unit's performance.

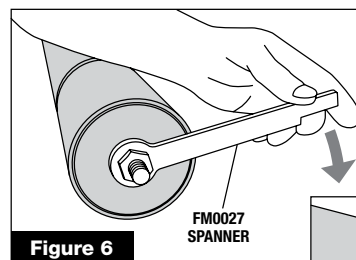


Figure 6

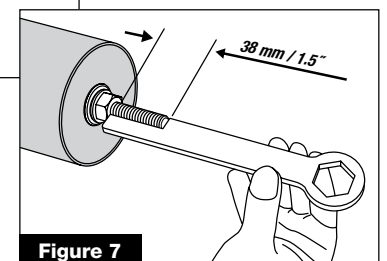


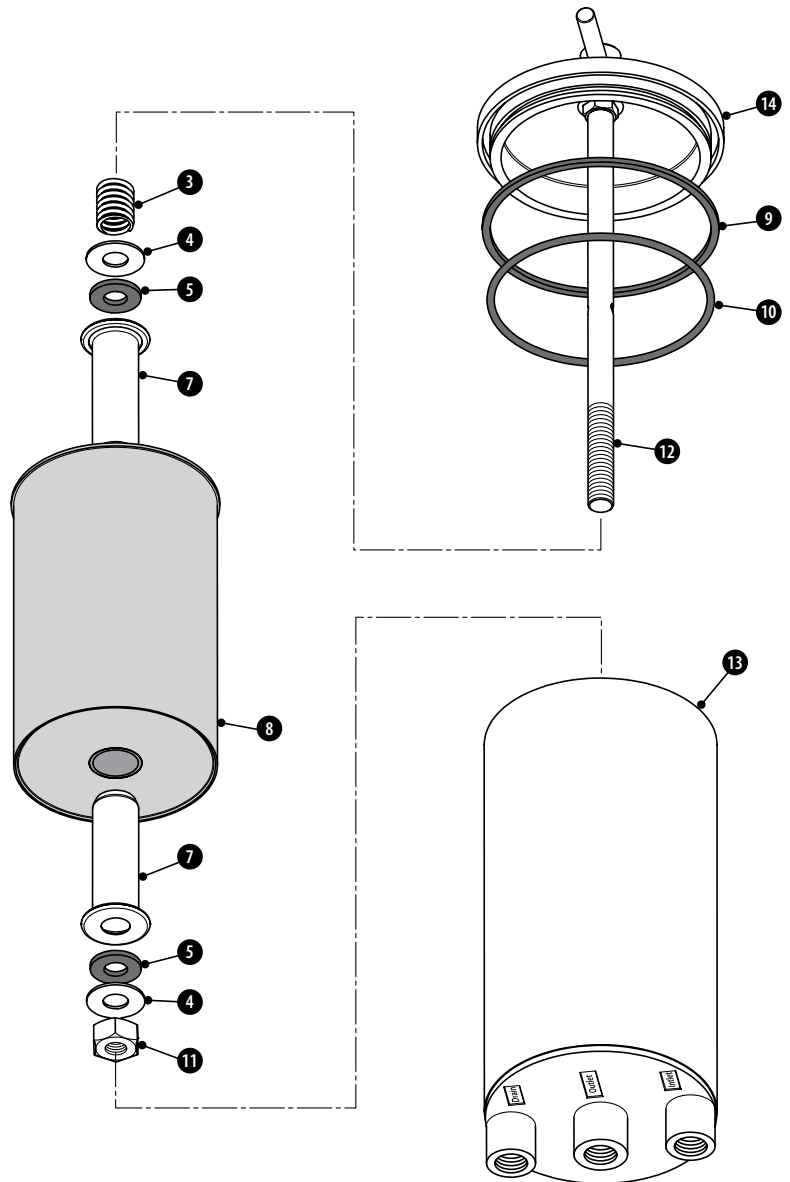
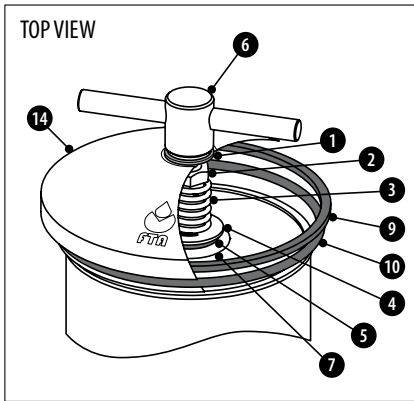
Figure 7

Replacing the Element Assembly

(Please consult the Operation and Maintenance Manual for your specific product.)

- 21 Insert the element assembly into the housing, carefully locating the lid O-ring into the housing tube.
- Note:** Take care not to dislodge the O-ring when assembling.
- 22 Tighten the tee handle until the lid gasket seats against the end of the housing, then tighten a further ½ turn (180°).

Note: FF1 Filter Assembly shown



Item No	Qty	Description	Part No
1	1	Washer	FF5002
2	1	Lid lock nut	FF5005
3	1	Lid compression spring	FF5006
4	2	Return tube washer	FF5007
5	2	Post seal	FF5008
6	1	Tee handle	FF5001
7	2	Centre tube	FF5012
8	1	Element	FF5000
9	1	Gasket, lid	FF5004
10	1	O-Ring, lid	FF5025
11	1	Compression nut	FF5029
12	1	Return tube - No 1	FF5031
13	1	Housing - No 1	FF5050
14	1	Lid	FF5003

Element Replacement Parts List

Item No	Description	Part No	Quantity Required			
			FF1	FF2	FF3	FF4
5	Post seal*	FF5008	2	3	4	5
8	Element	FF5000	1	2	3	4
9	Gasket, lid*	FF5004	1	1	1	1
10	O-Ring, lid*	FF5025	1	1	1	1

* Note: Examine these items carefully on disassembly. Replace at every second element change or if damaged.

Required Tools

